



Working Instruction, Mechanical

Applicable for K850, K850a, K850i, K858

CONTENTS

1	Introduction	3
1.1	Equipment	4
1.2	General cautions	5
1.3	Adhesives	5
2	Disassembly	6
2.1	Overview	6
2.1.1	Battery, M2 and Battery Door	7
2.1.2	Rear Cover Assembly	7
2.1.3	Antenna	9
2.1.4	Front Cover Assembly	10
2.1.5	Key FPC	12
2.1.6	Display	13
2.1.7	SIM/COMBO Reader	14
2.1.8	Xenon Flash Assy and Camera Cover	15
2.1.9	Speaker	15
2.1.10	Holder Metal Frame	16
2.1.11	Label Tray	17
2.1.12	Camera 5 MPixel CMOS	17
2.1.13	Bluetooth Antenna	18
2.1.14	Main PCB	18
3	Replacements	20
3.1	Battery	21
3.2	Memory Stick M2	21
3.3	Battery Door	21
3.4	Rear Cover Assembly	21
3.5	Antenna	21
3.6	Front Cover Assembly	21
3.7	Key FPC	21
3.8	Display	22
3.9	SIM/COMBO Reader	22
3.10	Xenon Flash Assy	22
3.11	Camera Cover	22
3.12	Speaker	22
3.13	Holder Metal Frame	22
3.14	Label Tray	22
3.15	Camera 5 MPixel CMOS	23



3.16 Bluetooth Antenna	23
3.17 Holder Inner Frame Assy	23
3.18 Rubber Connector	23
3.19 Key Volume	23
3.20 Key On/Off	23
3.21 Key Camera	23
3.22 Vibrator	23
3.23 Microphone	24
3.24 Microphone Connector Grommet	24
3.25 System Connector	24
3.26 Dust Gasket System Connector	24
3.27 Camera QCIF MPixel CMOS	24
3.28 Ear Speaker	24
3.29 Strap Plate	24
3.30 Liquid Intrusion Indicator	25
3.31 Liquid Intrusion Indicator	25
3.32 Label 26	
4 Reassembly	28
4.1 Overview	28
4.1.1 Main PCB	29
4.1.2 Bluetooth Antenna	30
4.1.3 Camera 5 MPixel CMOS	31
4.1.4 Label Tray	32
4.1.5 Holder Metal Frame	32
4.1.6 Speaker	33
4.1.7 Antenna	33
4.1.8 Xenon Flash Assy	34
4.1.9 SIM/COMBO Reader	35
4.1.10 Display	37
4.1.11 Key FPC	37
4.1.12 Front Cover Assembly	38
4.1.13 Rear Cover Assembly	39
4.1.14 Battery Door	40
4.1.15 Battery and M2	41
5 Revision history	42

1 Introduction

K850



1.1 Equipment

STANDARD TOOLS

- NTZ 112 459 - Torque Screwdriver
- Style 2A Tweezers
- Dental Hook
- Nylon Pointer
- NTZ 112 590 - Plectrum (guitar pick)
- NTZ 112 302/2 - Front Opening Tool
- NTZ 112 1052 - JCIS No. 0 Screw Bit
- SXA 109 3563 - Torx Bit No. 4
- NTZ 112 288 - Torx Bit No. 6



ESD EQUIPMENT

Protect the phone from ESD damages whenever it has been opened by using:

- ESD-wristband
- ESD-gloves



LABEL EQUIPMENT

The following special equipment is required when replacing or installing a new label:

- Hot air flow solder station
- Zebra printer connected to computer





1.2 General cautions

The following cautions are considered to be generic for all phone models and will not be repeated in the Disassembly, Replacements and Reassembly sections:

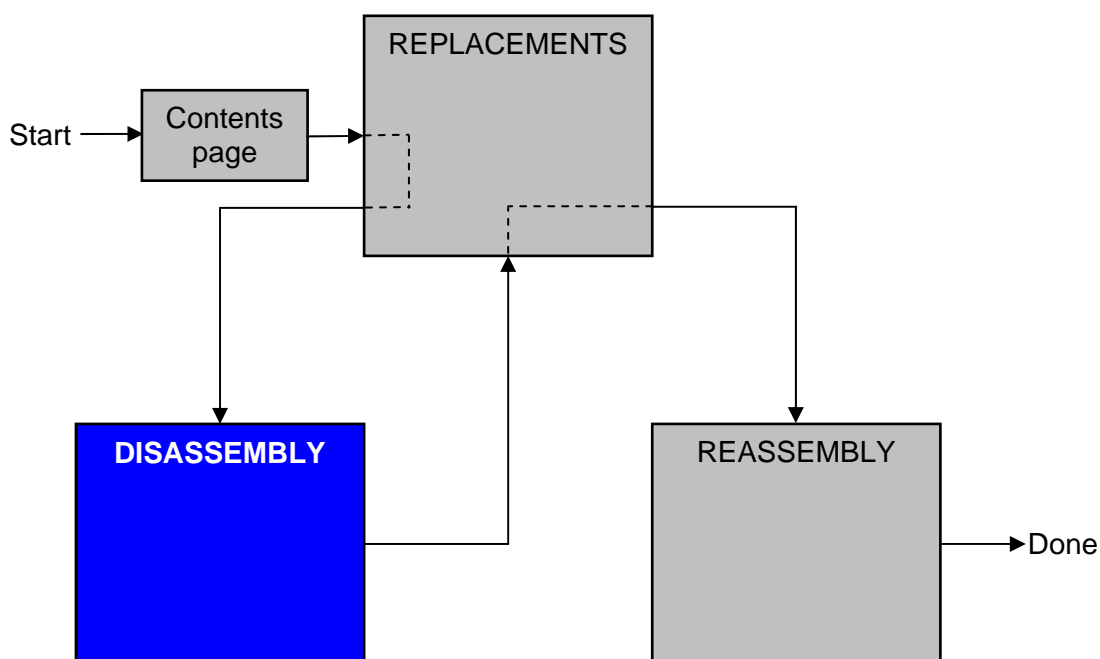
- ***SWITCH OFF THE PHONE AND REMOVE ANY MEMORY STICK BEFORE THE START OF THE DISASSEMBLY!***
- ***KEEP ALL CONTACT SURFACES CLEAN!***
- ***BE CAREFUL WHEN USING TOOLS LIKE THE DENTAL HOOK, TWEEZERS, OPENING TOOLS, GUITAR PICK ETC. TO AVOID SCRATCHES OR DAMAGES TO THE EXTERIOR AND INTERIOR PARTS OF THE PHONE!***
- ***BE CAREFUL NOT TO DAMAGE ANY CONTACT SPRINGS!***
- ***REMEMBER TO REMOVE THE PROTECTION FOILS ON NEW PARTS SUCH AS THE FRONT COVER AND LCD!***
- ***NEVER TOUCH THE DISPLAY GLASS!***
- ***USE AIR BLOW EQUIPMENT TO KEEP THE FRONT WINDOW AND DISPLAY MODULE DUST FREE!***

1.3 Adhesives

Use a dental hook and/or the tweezers to remove old adhesives.
Clean the surface with isopropyl alcohol before attaching new adhesives.

2 Disassembly

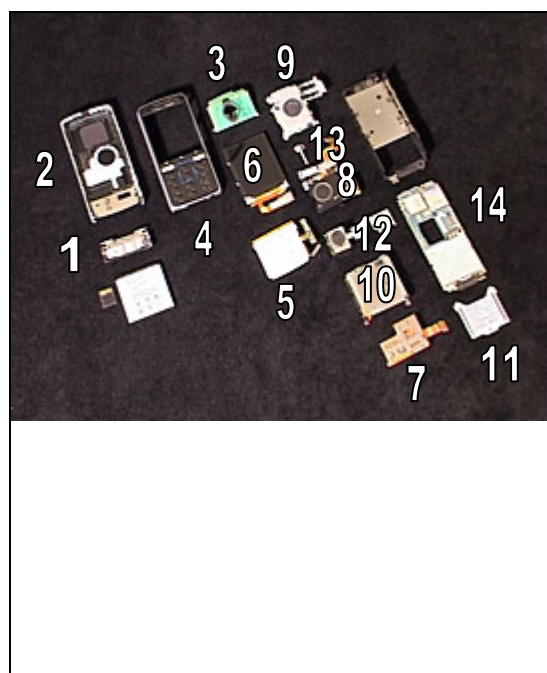
When you are going to replace a part being listed in *Replacements*, the instruction of that section usually begins by directing you to this *Disassembly* section with a specification of the instructions you have to carry out in order to disassemble the phone as far as needed before returning to *Replacements* for the actual replacement.



2.1 Overview

The disassembly is done in the following sequence:

1. Battery, M2 and Battery Door
2. Rear Cover Assembly
3. Antenna
4. Front Cover Assembly
5. Key FPC
6. Display
7. SIM/COMBO Reader
8. Xenon Flash Assy and Camera Cover
9. Speaker
10. Holder Metal Frame
11. Label Tray
12. Camera 5 MPixel CMOS
13. Bluetooth Antenna
14. Main PCB

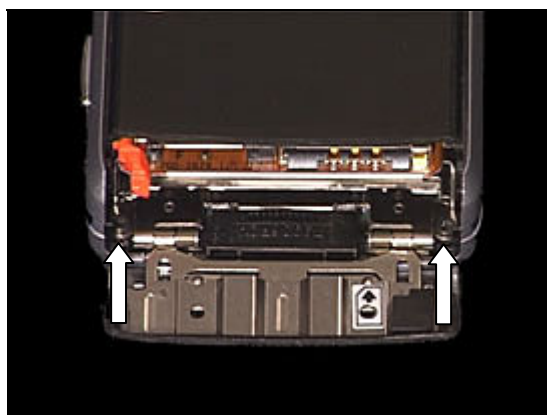


2.1.1 Battery, M2 and Battery Door

Remove the battery and the M2 Memory Stick.



Remove the two screws (Torx T4). You might have to slide the orange battery clip to the side to be able to access the left screw.

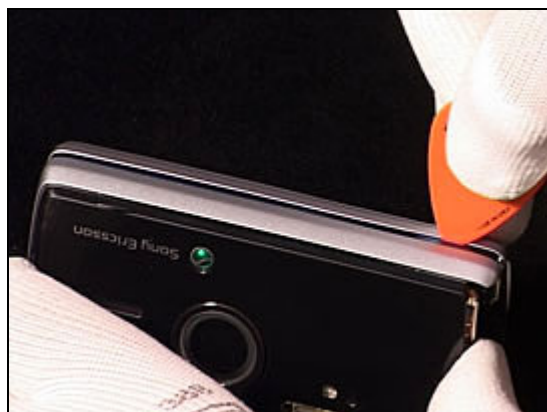


Remove the battery door.



2.1.2 Rear Cover Assembly

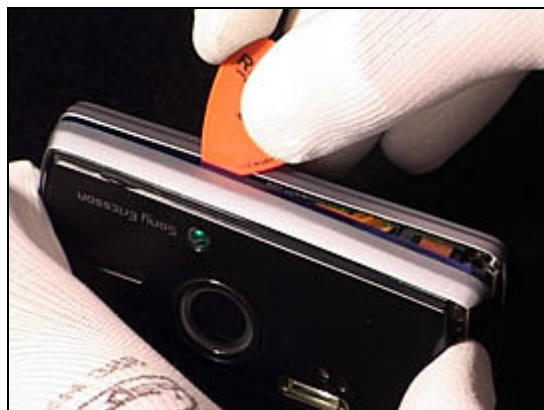
Make a small gap between the front cover and the back cover. Use the guitar pick and slide it along the edge of the phone as shown in the picture.



Back Cover *continued*

BE CAREFUL NOT TO DAMAGE OR SCRATCH THE PLASTICS

Continue to slide the guitar pick along the side of the phone until all the snap hooks are released.



BE CAREFUL NOT TO DAMAGE OR SCRATCH THE PLASTICS AND THE CAMERA SWITCH!

Repeat previous action on the opposite side of the phone.



Make sure all the snap hooks are released.



Once all snap hooks on both sides have been released, carefully lift the rear cover in the direction of the arrow and remove it.



Back Cover *continued*

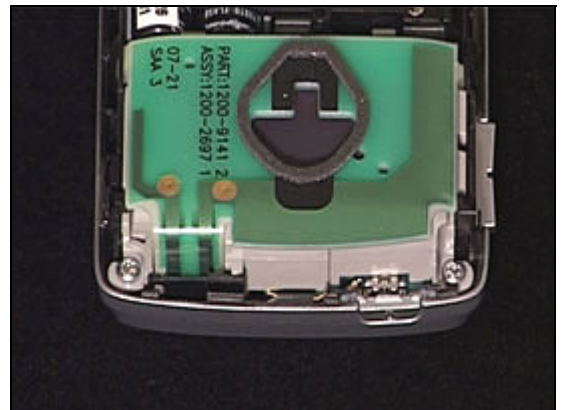
BE CAREFUL NOT TO DAMAGE OR SCRATCH THE PLASTICS

Continue to slide the guitar pick along the side of the phone until all the snap hooks are released.



2.1.3 Antenna

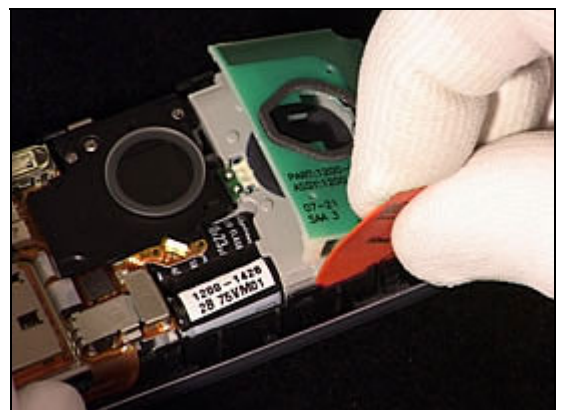
Make sure all the snap hooks are released.



Carefully release the first Antenna snap hook using the guitar pick.



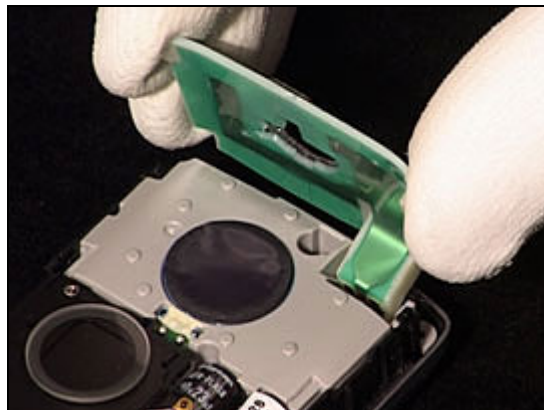
Carefully release the second Antenna snap hook on the other side. Mind the angle of the guitar pick as shown in picture.



Antenna *continued*

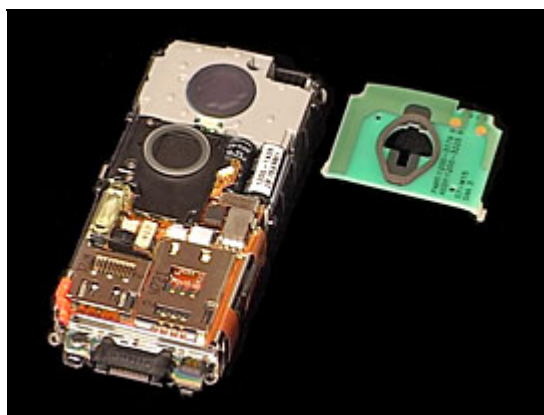
BE CAREFUL NOT TO DAMAGE OR SCRATCH THE PLASTICS

Once the two Antenna snap hooks have been released, remove the Antenna.



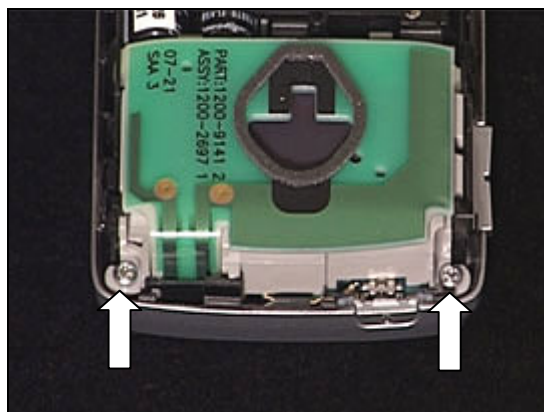
BE CAREFUL NOT TO DAMAGE OR SCRATCH THE PLASTICS AND THE CAMERA SWITCH!

Carefully release the Front Cover snap hooks using the guitar pick.

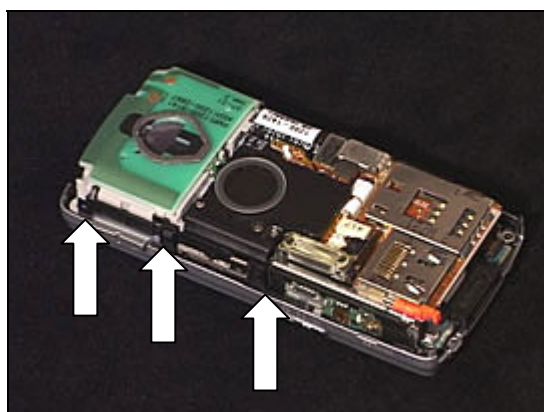


2.1.4 Front Cover Assembly

Remove the two screws (Torx T6).



Carefully release the Front Cover snap hooks using the guitar pick.



Front Cover Assembly *continued*

BE CAREFUL NOT TO DAMAGE OR SCRATCH THE PLASTICS

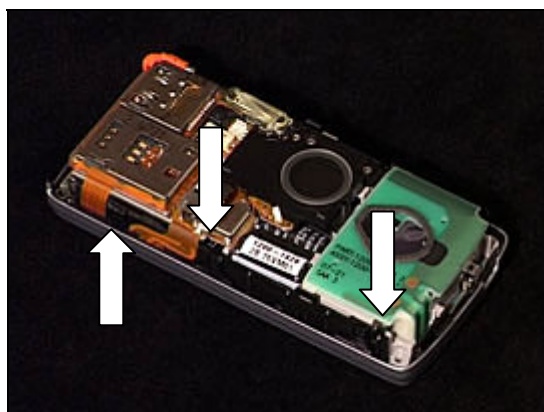


BE CAREFUL NOT TO DAMAGE OR SCRATCH THE PLASTICS



BE CAREFUL NOT TO DAMAGE OR SCRATCH THE PLASTICS AND THE CAMERA SWITCH!

Repeat previous action on the opposite side of the phone.

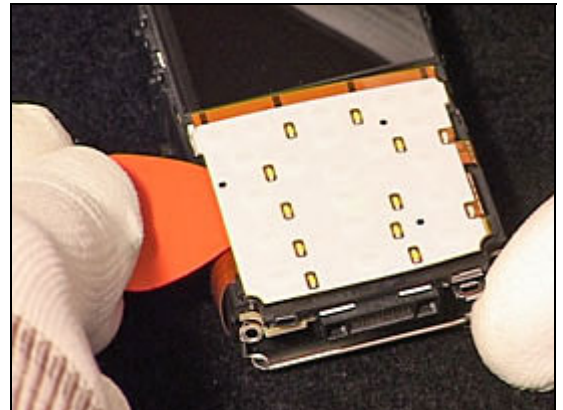


Once all Front Cover snap hooks have been released, remove the front cover.

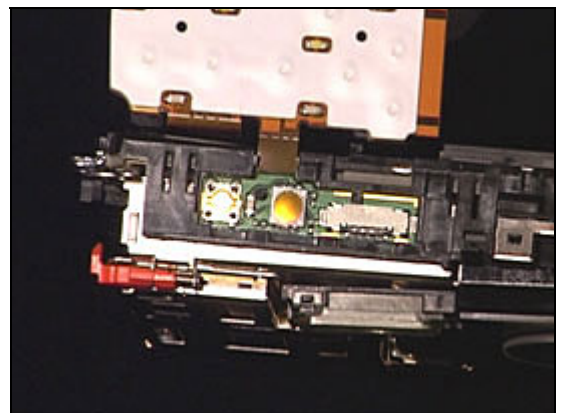


2.1.5 Key FPC

Carefully release the Keyboard Flex using the guitar pick.



Carefully lift the Keyboard Flex.

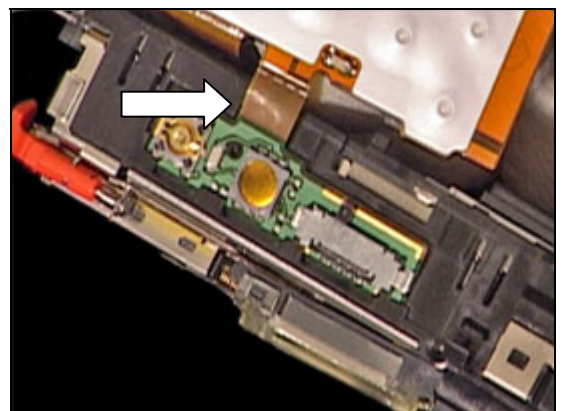


Release the Keyboard Flex BtB Connector using the Nylon pointer.

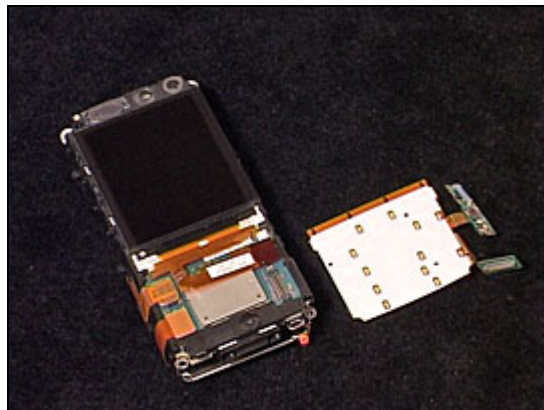


THE FLEX FILM DAMAGE VERY EASILY, BE CAREFUL!

Carefully loosen the Camera Key Flex from the frame using a pair of tweezers. Mind the plastic tap in the frame so you do not damage the flex film.



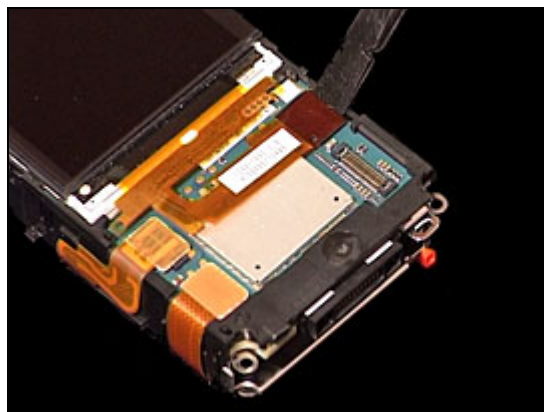
Key FPC *continued*



2.1.6 Display

BE CAREFUL NOT TO DAMAGE OR SCRATCH THE PLASTICS

Release the LCD BtB connector using the Nylon pointer.



BE CAREFUL NOT TO DAMAGE OR SCRATCH THE LCD

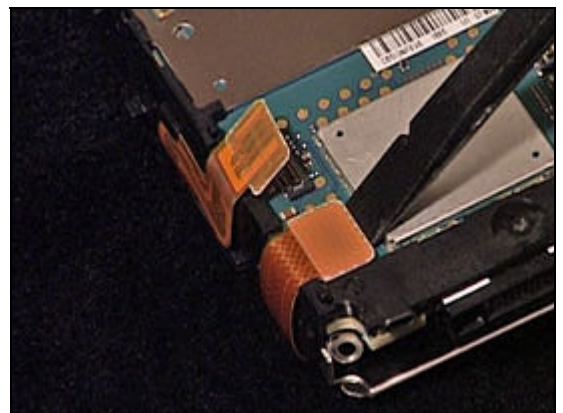
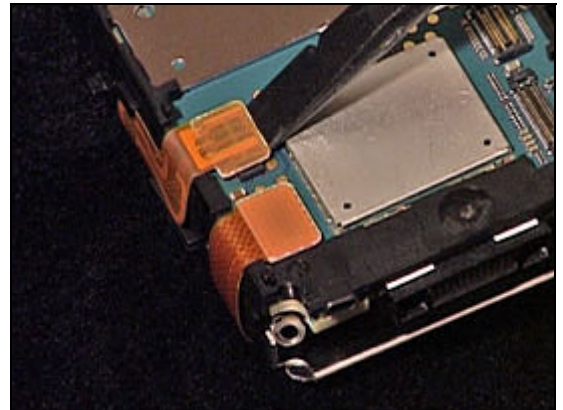
Carefully insert the guitar pick under the white LCD carrier and loosen the LCD. Remove the LCD.



2.1.7 SIM/COMBO Reader

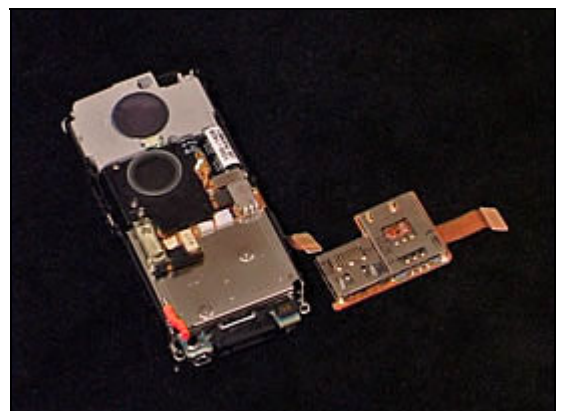
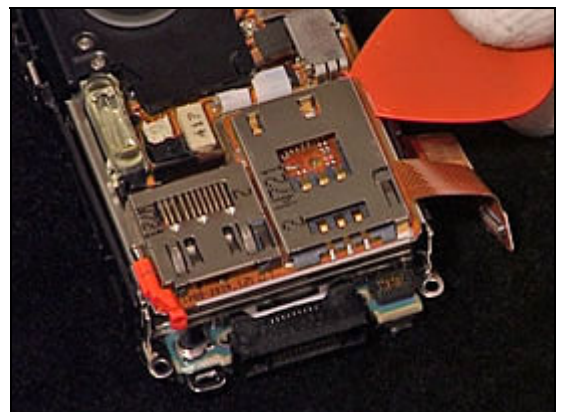
CAUTION TEXT

Release the two BtB connectors using the Nylon pointer.



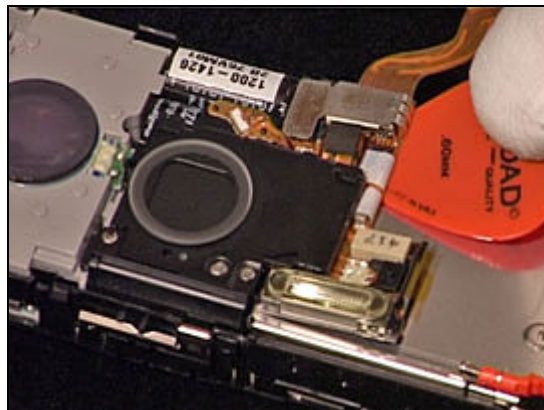
BE CAREFUL NOT TO DAMAGE THE SIM/COMBO READER

Remove the SIM/COMBO Reader using the guitar pick.



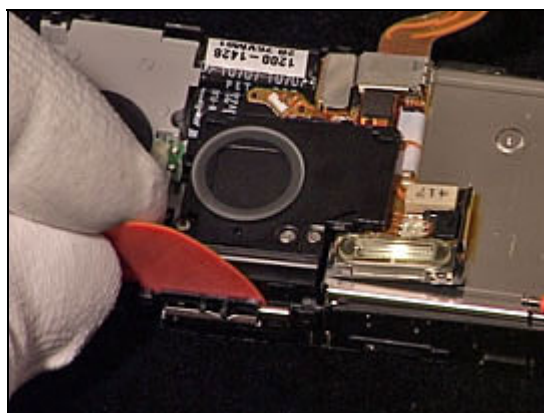
2.1.8 Xenon Flash Assy and Camera Cover

Loosen the right corner of the Camera Flex.



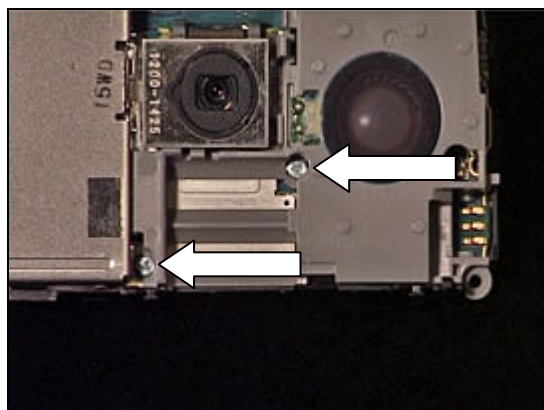
BE CAREFUL NOT TO DAMAGE THE CAMERA FLEX.

Release the Camera Flex from the snap hook in the frame.
Carefully remove the Camera Flex.



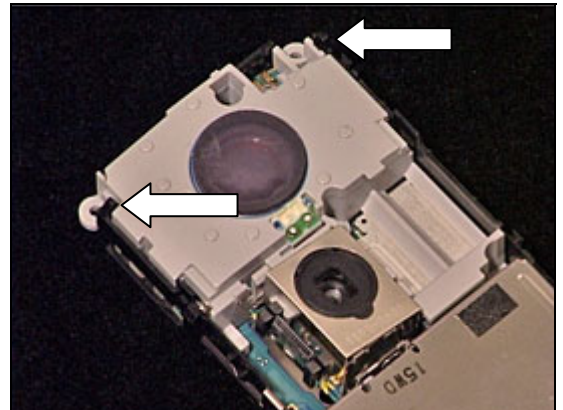
2.1.9 Speaker

Remove the two screws (JCIS).



Speaker continued

Remove the Speaker Box by releasing it from the two snap hooks.



2.1.10 Holder Metal Frame

Remove the Holder Metal Frame Assy.



2.1.11 Label Tray

Remove the Label Tray.



2.1.12 Camera 5 MPixel CMOS

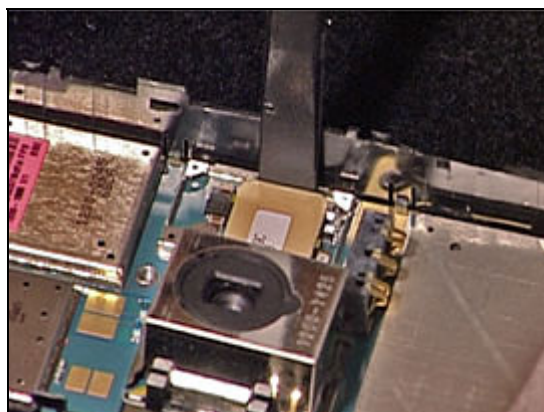
BE CAREFUL NOT TO DAMAGE ANY COMPONENTS ON THE ROA BOARD.

Carefully release the Camera Shield Can Lid using the Nylon pointer.

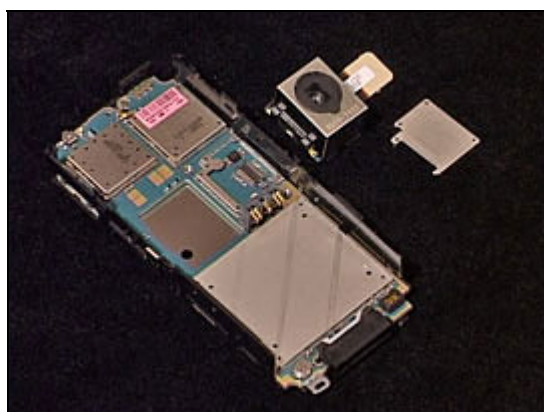


BE CAREFUL NOT TO DAMAGE ANY COMPONENTS ON THE ROA BOARD

Release the Camera BtB connector using the Nylon pointer.

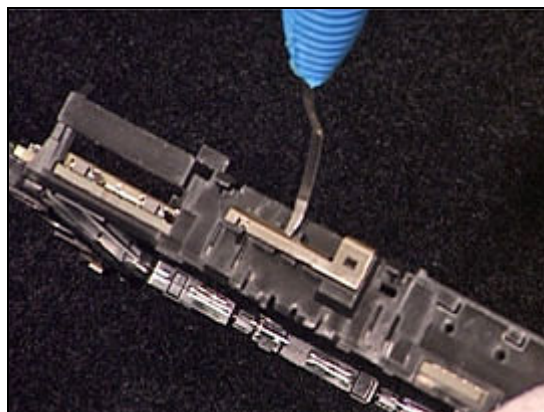


Remove the 5 Mpix Camera.



2.1.13 Bluetooth Antenna

Release the Bluetooth Antenna using the Dental Hook.



BE CAREFUL NOT TO DAMAGE ANY COMPONENTS ON THE ROA BOARD

Carefully release and remove the Bluetooth Antenna using the Dental Hook.



2.1.14 Main PCB

BE CAREFUL NOT TO DAMAGE ANY COMPONENTS ON THE ROA BOARD

Carefully release the ROA Board from the frame by using the Front Opening Tool.



Main PCB *continued*



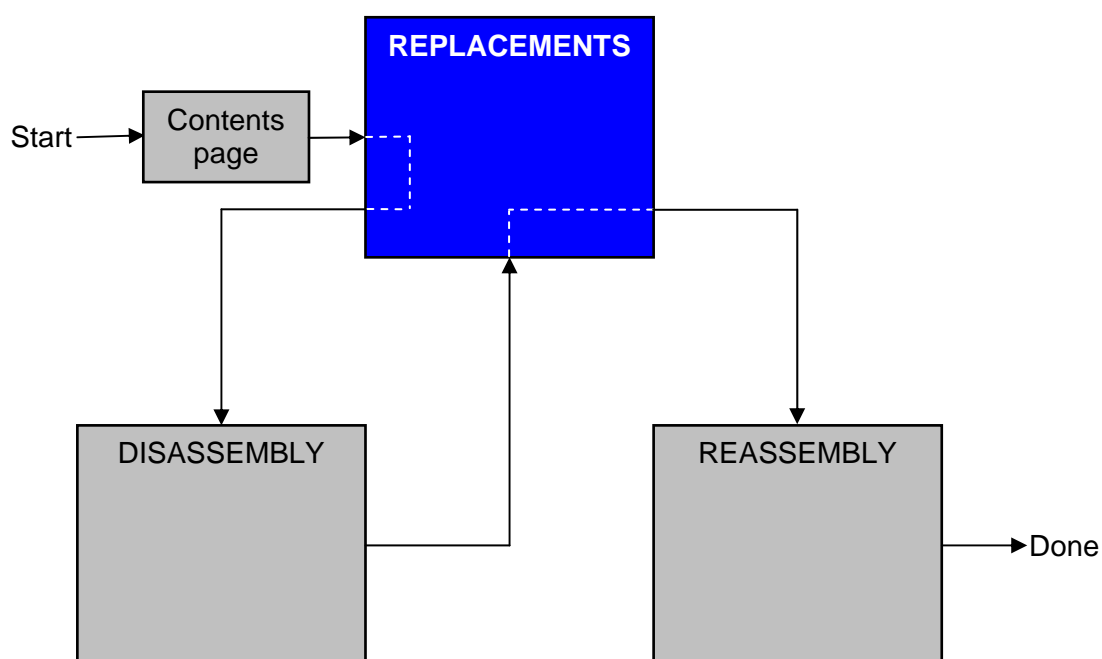
3 Replacements

Search for the part to be replaced on the Contents page and go to that instruction to be found in this *Replacements* section.

The instruction usually begins by directing you to the *Disassembly* section with a specification of the instructions you have to carry out in order to disassemble the phone as far as needed before the actual replacement.

Go back to this *Replacements* section and carry out the instruction.

The instruction usually ends by directing you to the *Reassembly* section with a specification of the instructions you have to carry out in order to reassemble the phone.





3.1 Battery

Follow the 2.1.1 Disassembly instructions!

Prepare the new battery.

Follow the 4.1.15 Reassembly instructions!

3.2 Memory Stick M2

Follow the 2.1.1 Disassembly instructions!

Prepare the new Memory Stick.

Follow the 4.1.15 Reassembly instructions!

3.3 Battery Door

Follow the 2.1.1 Disassembly instructions!

Prepare the new Battery Door.

Follow the 4.1.14 – 4.1.15 Reassembly instructions!

3.4 Rear Cover Assembly

Follow the 2.1.1 – 2.1.2 Disassembly instructions!

Prepare the new Back Cover.

Follow the 4.1.13 – 4.1.15 Reassembly instructions!

3.5 Antenna

Follow the 2.1.1 – 2.1.13 Disassembly instructions!

Prepare the new Antenna.

Follow the 4.1.7 – 4.1.15 Reassembly instructions!

3.6 Front Cover Assembly

Follow the 2.1.1 – 2.1.4 Disassembly instructions!

Prepare the new Front Cover Assembly

Follow the 4.1.12 – 4.1.15 Reassembly instructions!!

3.7 Key FPC

Follow the 2.1.1 – 2.1.5 Disassembly instructions!

Prepare the new Key FPC.

Follow the 4.1.11 – 4.1.15 Reassembly instructions!



3.8 Display

Follow the 2.1.1 – 2.1.6 Disassembly instructions!

Prepare the new Display.

Follow the 4.1.10 – 4.1.15 Reassembly instructions!!

3.9 SIM/COMBO Reader

Follow the 2.1.1 – 2.1.7 Disassembly instructions!

Prepare the new SOM/COMBO Reader

Follow the 4.1.9 – 4.1.15 Reassembly instructions!!

3.10 Xenon Flash Assy

Follow the 2.1.1 – 2.1.8 Disassembly instructions!

Release the BtB connector from the Camera Cover.

Prepare the new Xenon Flash Assy.

Follow the 4.1.8 – 4.1.15 Reassembly instructions!!

3.11 Camera Cover

Follow the 2.1.1 – 2.1.8 Disassembly instructions!

Release the BtB connector from the Xenon Flash Assy.

Prepare the new Camera Cover.

Follow the 4.1.8 – 4.1.9 Reassembly instructions!!

3.12 Speaker

Follow the 2.1.1 – 2.1.9 Disassembly instructions!

Prepare the new Speaker.

Follow the 4.1.6 – 4.1.15 Reassembly instructions!!

3.13 Holder Metal Frame

Follow the 2.1.1 – 2.1.10 Disassembly instructions!

Prepare the new Holder Metal Frame.

Follow the 4.1.5 – 4.1.15 Reassembly instructions!!

3.14 Label Tray

Follow the 2.1.1 – 2.1.11 Disassembly instructions!

Prepare the new Label Tray.

Follow the 4.1.4 – 4.1.15 Reassembly instructions!!

3.15 Camera 5 MPixel CMOS

Follow the 2.1.1 – 2.1.12 Disassembly instructions!

Prepare the new Camera.

Follow the 4.1.3 – 4.1.15 Reassembly instructions!!

3.16 Bluetooth Antenna

Follow the 2.1.1 – 2.1.13 Disassembly instructions!

Prepare the new Bluetooth Antenna.

Follow the 4.1.2 – 4.1.15 Reassembly instructions!!

3.17 Holder Inner Frame Assy

Follow the 2.1.1 – 2.1.14 Disassembly instructions!

Prepare the new Holder Inner Frame Assy.

Follow the 4.1.1 – 4.1.15 Reassembly instructions!

3.18 Rubber Connector

Follow the 2.1.1 – 2.1.4 Disassembly instructions!

Prepare the new Rubber Connector.

Follow the 4.1.12 – 4.1.15 Reassembly instructions!

3.19 Key Volume

Follow the 2.1.1 – 2.1.2 Disassembly instructions!

Prepare the new Key Volume.

Follow the 4.1.13 – 4.1.15 Reassembly instructions!

3.20 Key On/Off

Follow the 2.1.1 – 2.1.2 Disassembly instructions!

Prepare the new Key On/Off.

Follow the 4.1.13 – 4.1.15 Reassembly instructions!

3.21 Key Camera

Follow the 2.1.1 – 2.1.2 Disassembly instructions!

Prepare the new Key Camera.

Follow the 4.1.13 – 4.1.15 Reassembly instructions!

3.22 Vibrator

Follow the 2.1.1 – 2.1.9 Disassembly instructions!

Prepare the new Vibrator.

Follow the 4.1.6 – 4.1.15 Reassembly instructions!



3.23 Microphone

Follow the 2.1.1 – 2.1.14 Disassembly instructions!

Prepare the new Microphone.

Follow the 4.1.1 – 4.1.15 Reassembly instructions!

3.24 Microphone Connector Grommet

Follow the 2.1.1 – 2.1.14 Disassembly instructions!

Prepare the new Microphone Connector Grommet.

Follow the 4.1.1 – 4.1.15 Reassembly instructions!

3.25 System Connector

Follow the 2.1.1 – 2.1.14 Disassembly instructions!

Prepare the new System Connector.

Follow the 4.1.1 – 4.1.15 Reassembly instructions!

3.26 Dust Gasket System Connector

Follow the 2.1.1 – 2.1.14 Disassembly instructions!

Prepare the new Dust Gasket System Connector.

Follow the 4.1.1 – 4.1.15 Reassembly instructions!

3.27 Camera QCIF MPixel CMOS

Follow the 2.1.1 – 2.1.4 Disassembly instructions!

Release the Camera BtB from the Main PCB.

Prepare the new Camera.

Follow the 4.1.12 – 4.1.15 Reassembly instructions!

3.28 Ear Speaker

Follow the 2.1.1 – 2.1.4 Disassembly instructions!

Prepare the new Ear Speaker.

Follow the 4.1.12 – 4.1.15 Reassembly instructions!

3.29 Strap Plate

Follow the 2.1.1 – 2.1.14 Disassembly instructions!

Prepare the new Strap Plate.

Follow the 4.1.1 – 4.1.15 Reassembly instructions!

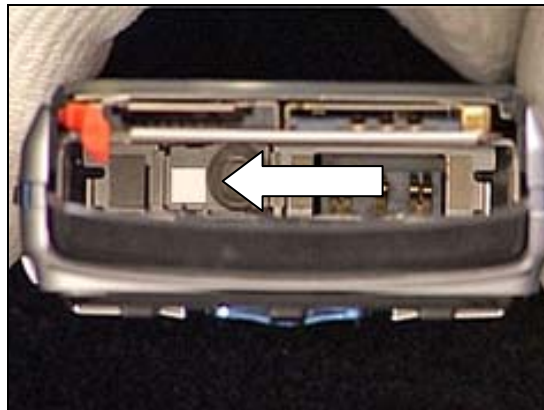
3.30 Liquid Intrusion Indicator

Follow the 2.1.1 Disassembly instructions!

Remove the old Indicator using the dental hook and a pair of tweezers.

Prepare the new Liquid Intrusion Indicator.

Follow the 4.1.14 – 4.1.15 Reassembly instructions!



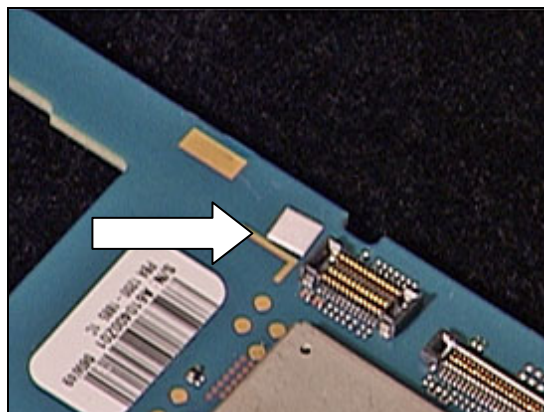
3.31 Liquid Intrusion Indicator

Follow the 2.1.1 – 2.1.4 Disassembly instructions!

Remove the old Indicator using the dental hook and a pair of tweezers.

Prepare the new Liquid Intrusion Indicator.

Follow the 4.1.12 – 4.1.15 Reassembly instructions!



3.32 Label

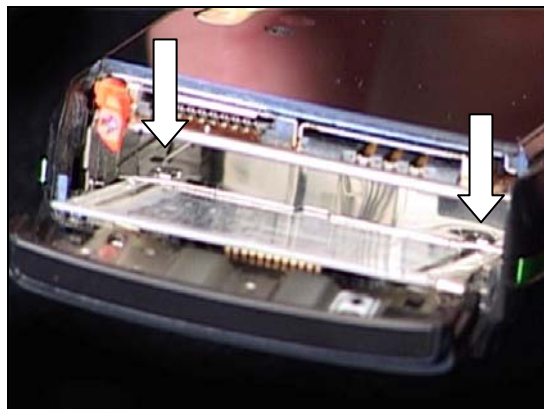
Follow the 2.1.1 Disassembly instructions!

There are two snaps positioned in the Battery Cavity.

Use a dentist hook and bend up the right snap hook.

Use a dentist hook and bend up the left snap hook.

Pull out the Label Tray.



Read the old label and/or write the information into the "Label make" program before removal

Heat up the label by using hot air, if needed.

Carefully remove the label without causing scratches

If there still are residues, clean the surface with isopropyl alcohol

Check that the proper label format is loaded in the Zebra printer.

Write a new label by using the program "Label make" and check that the printing is OK.

Take the new label and place it onto the frame as in the adjacent picture.

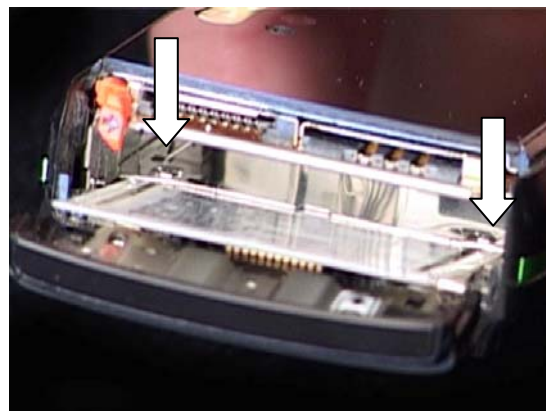
ONE LABEL ONLY IS ALLOWED!



Position the Label Tray under the Battery Cavity.

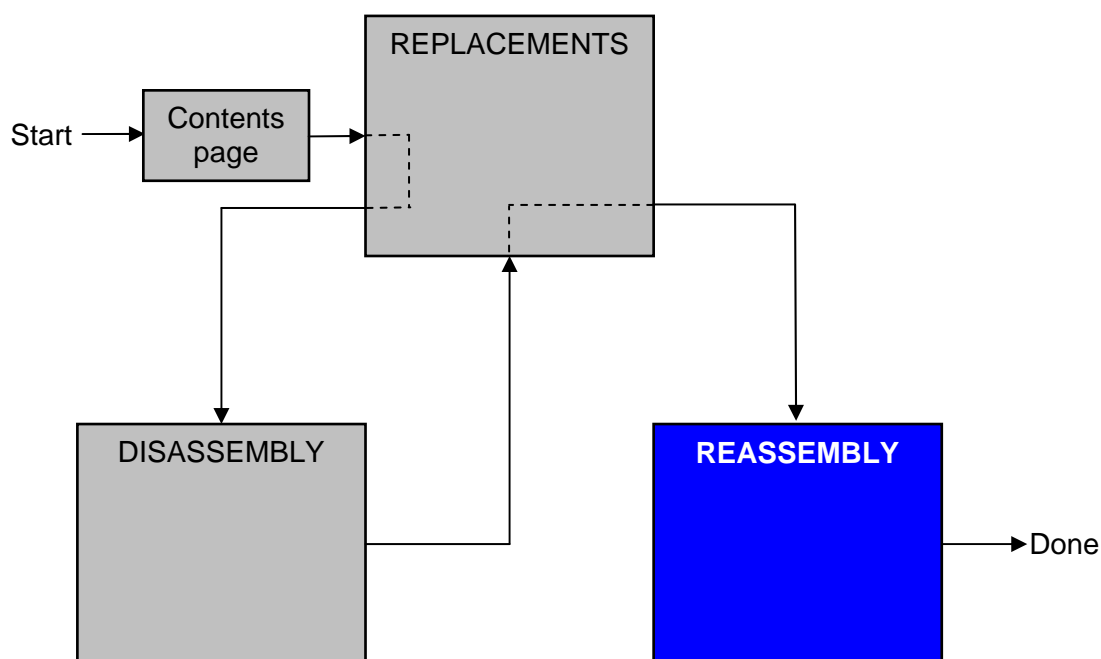


Use a dentist hook to fold down the two snap hooks.
Follow the 4.1.15 Reassembly instructions!



4 Reassembly

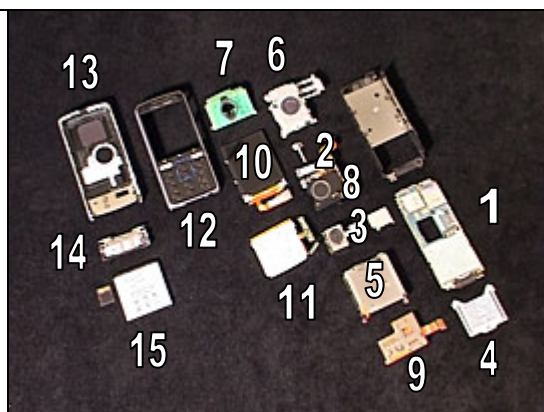
After replacing a part being listed in Replacements, the instruction of that section usually ends by directing you to this Reassembly section with a specification of the instructions you have to carry out in order to reassemble the phone.



4.1 Overview

The reassembly is done in the following sequence:

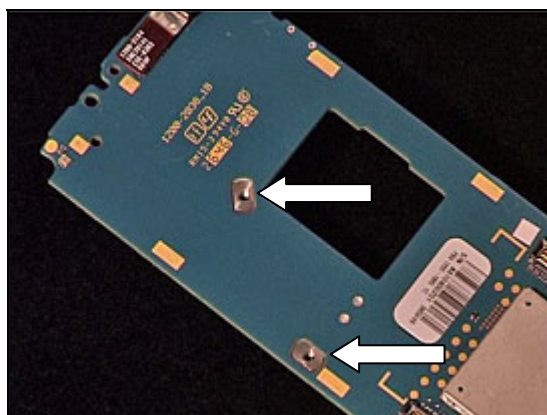
1. Main PCB
2. Bluetooth Antenna
3. Camera 5 MPixel CMOS
4. Label Tray
5. Holder Metal Frame
6. Speaker
7. Antenna
8. Xenon Flash Assy
9. SIM/COMBO Reader
10. Display
11. Key FPC
12. Front Cover Assembly
13. Rear Cover Assembly
14. Battery Door
15. Battery and M2



4.1.1 Main PCB

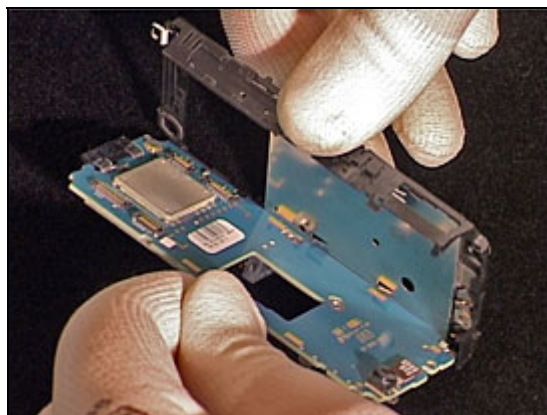


Place the two Thread Inserts into the cavities on the PCB.



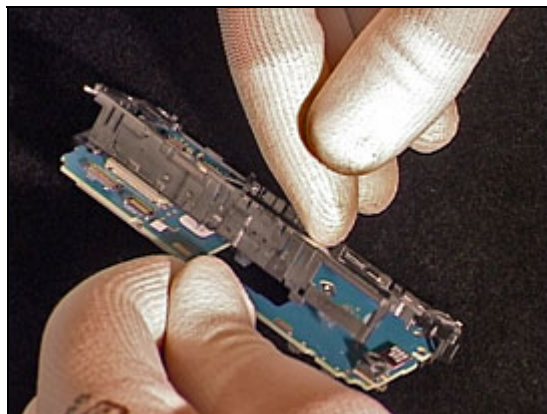
BE CAREFUL SO THE THE THREAD INSERTS DOES NOT FALL OUT OF THE MAIN PCB

Place the Main PCB into the Inner Frame.



BE CAREFUL SO THE THE THREAD INSERTS DOES NOT FALL OUT OF THE MAIN PCB

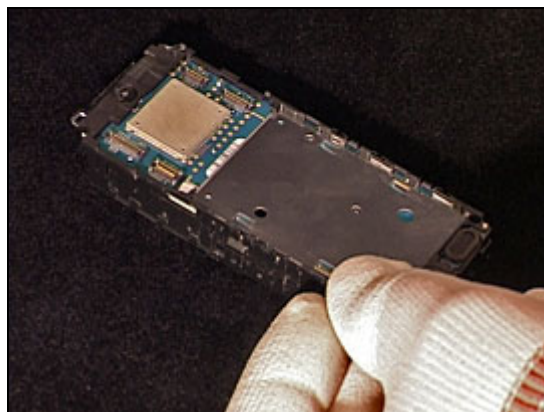
Slowly fold the Inner Frame on top of the Main PCB.



Main PCB *continued*

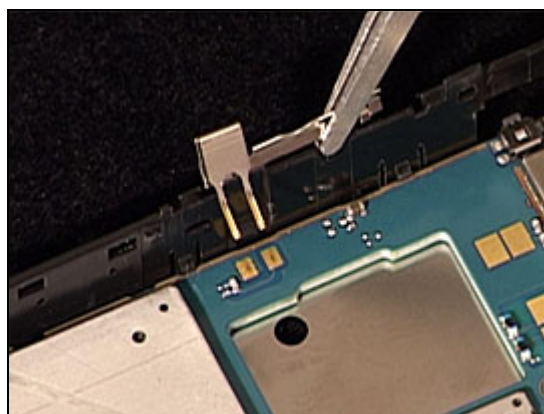
MAKE SURE THE THREAD INSERTS ARE STILL IN PLACE

Snap the Main PCB into the Inner Frame.

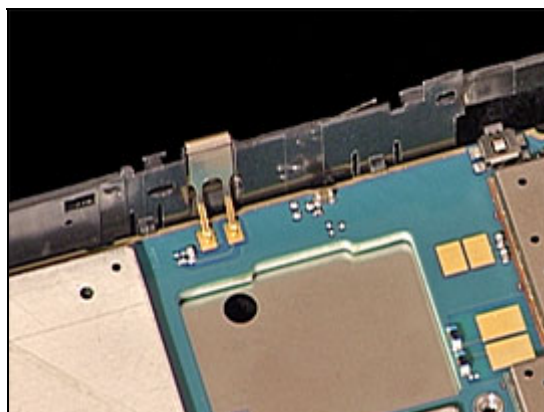


4.1.2 Bluetooth Antenna

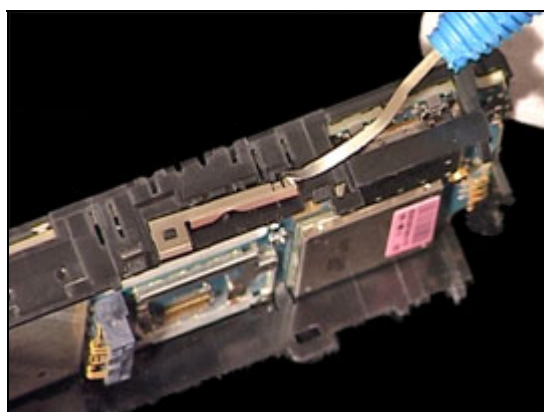
Place the Bluetooth Antenna into the Inner Frame with a pair of tweezers.



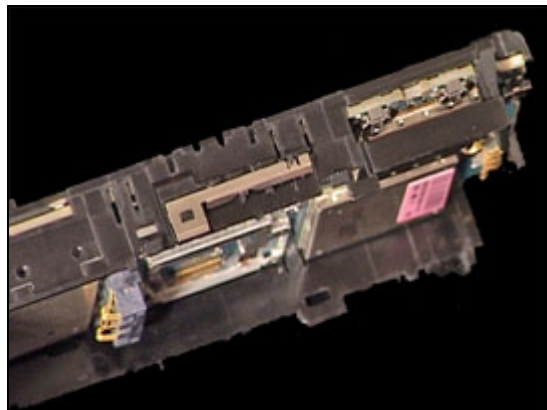
Press the Bluetooth Antenna into position in the Inner Frame.



Place the Bluetooth Antenna underneath the plastic clip on the Inner Frame using a dental hook.



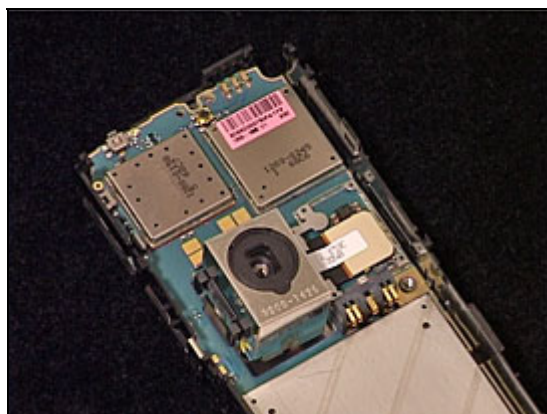
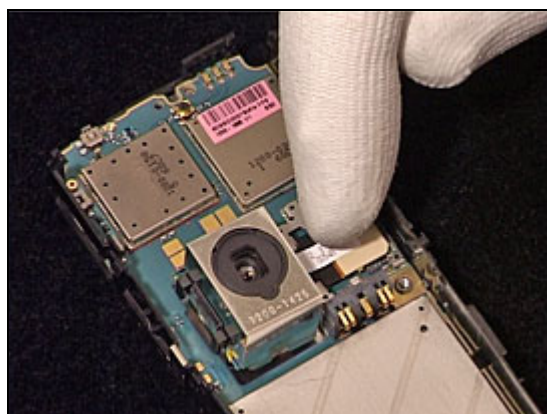
Bluetooth Antenna *continued*



4.1.3 Camera 5 MPixel CMOS

BE CAREFUL NOT TO DAMAGE THE BOARD TO BOARD CONNECTOR

Place the Camera into its position in the Main PCB.
Carefully connect the BtB Connector to the Main PCB.



NEVER REUSE AN OLD SHIELD CAN LID

Mount a new Camera Shield Can Lid on top of the Camera BtB Connector.



Camera 5 MPixel CMOS *continued*

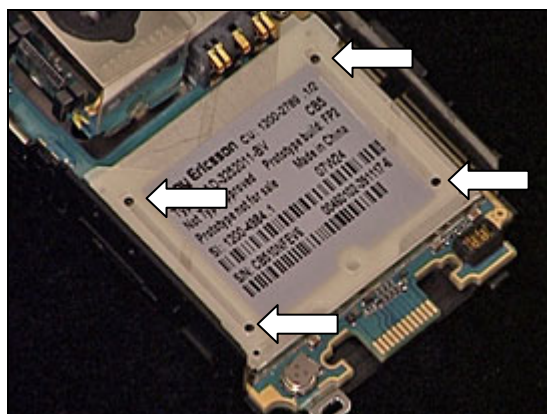
MAKE SURE THE CAMERA SHIELD CAN LID IS PROPERLY ATTACHED



4.1.4 Label Tray

MIND THE GUIDING HOLES

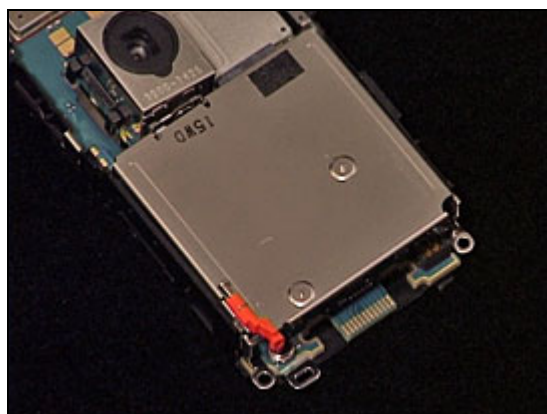
Place the Holder Plastic Label Tray into position. Use the guiding holes to get it aligned correctly.



4.1.5 Holder Metal Frame

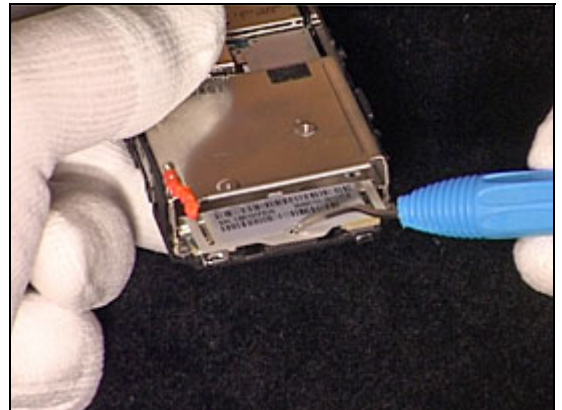
MAKE SURE THE LABEL TRAY IS IN PLACE AND CORRECTLY ALIGNED

Place the Holder Metal Frame Assy into position.



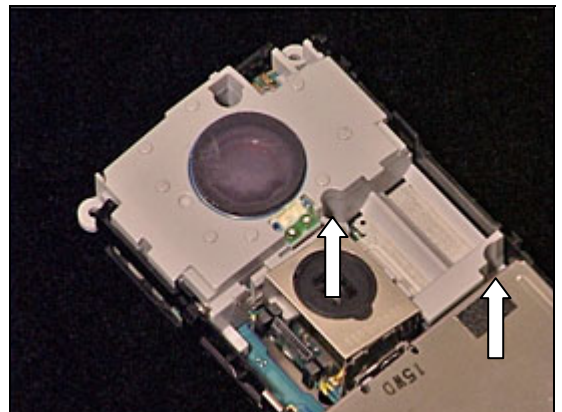
Holder Metal Frame *continued*

Make sure you can slide out the Label Tray before you continue the Reassembly.



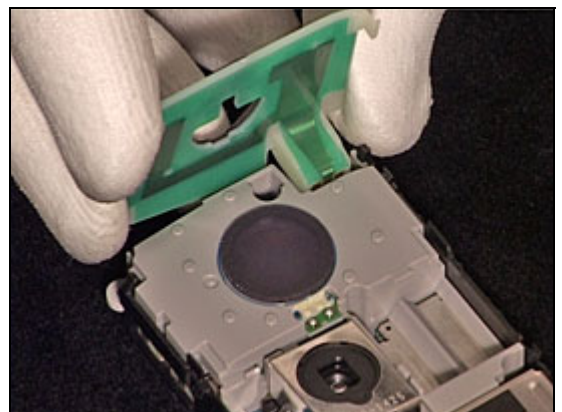
4.1.6 Speaker

Assemble the Speaker. Insert and tighten the 2 screws (JCIS 11Ncm).



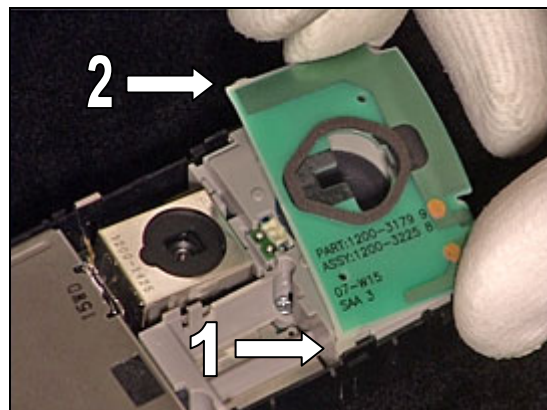
4.1.7 Antenna

Place the Antenna as shown in picture.



Antenna *continued*

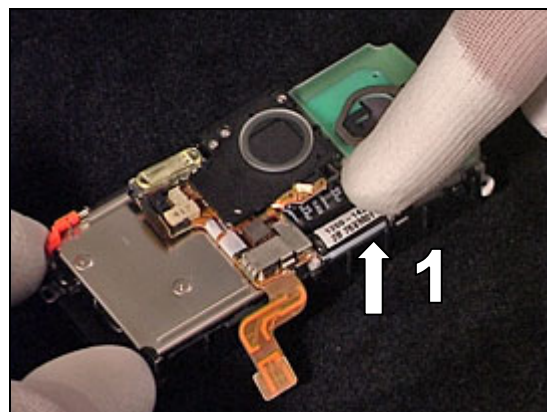
Slowly tilt the Antenna into position and fit the first snap hook (1) into the Inner Frame then carefully snap the second snap hook (2) into position.



4.1.8 Xenon Flash Assy

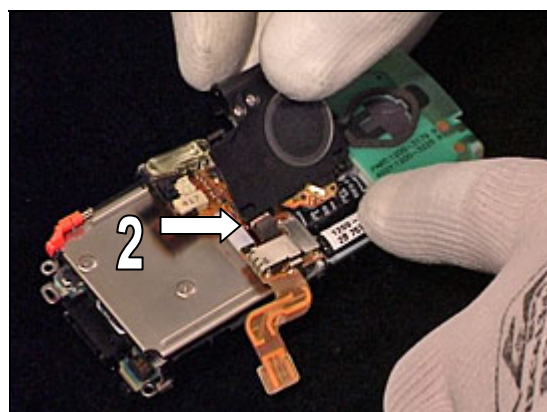
BE CAREFULL NOT TO DAMAGE THE FLEX FILM OR LOOSEN THE BTB CONNECTOR

Start with placing the Capacitor package into position (1).



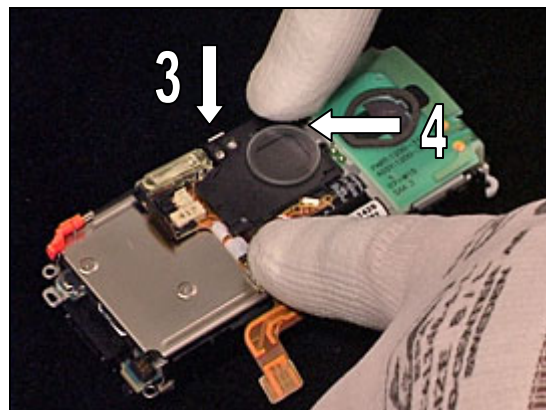
BE CAREFULL NOT TO DAMAGE THE FLEX FILM OR LOOSEN THE BTB CONNECTOR

Place the Camera Cover into position, start as shown in picture (2). Make sure the Camera gets into the frame of the Camera Cover.



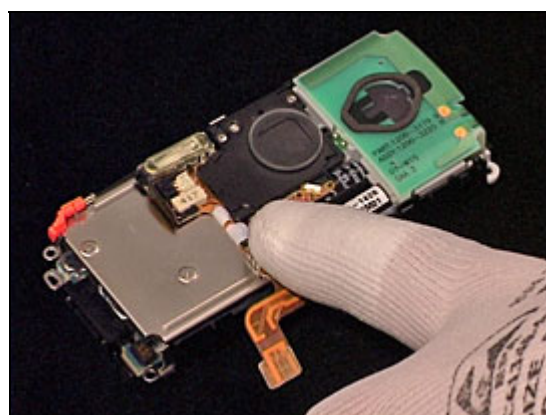
Xenon Flash Assy *continued*

Press the Camera Cover into the Inner Frame (3) and Speaker (4) snap hooks.



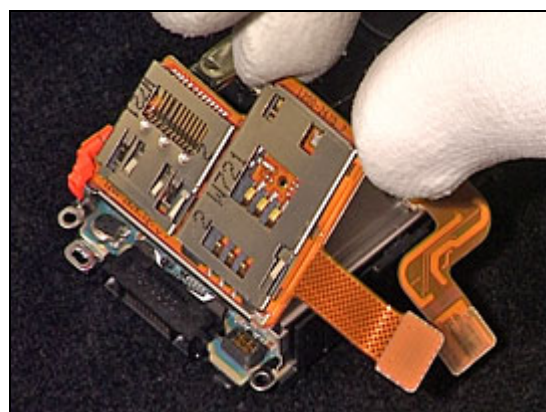
MAKE SURE YOU HAVE REMOVED THE OLD ADHESIVE ON THE HOLDER METAL FRAME AND REPLACED IT WITH A NEW ADHESIVE

Gently press the Xenon Flash Assy as shown in picture to secure it has been fixed to the Adhesive on the Holder Metal Frame.



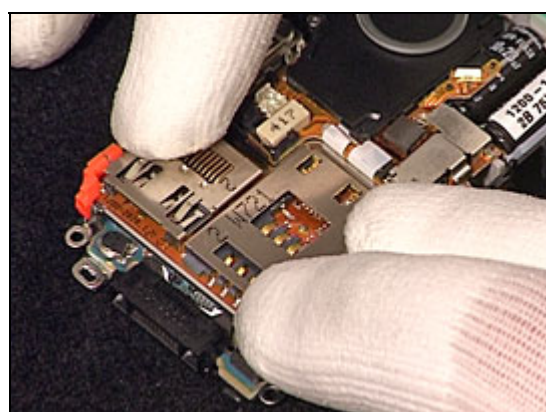
4.1.9 SIM/COMBO Reader

Place the SIM/COMBO Reader as shown in picture, carefully fold it down into position, use the guiding pins on the Holder Metal Frame.



BE CAREFUL WHEN PRESSING NOT TO DAMAGE THE SIM OR M2 HOLDER

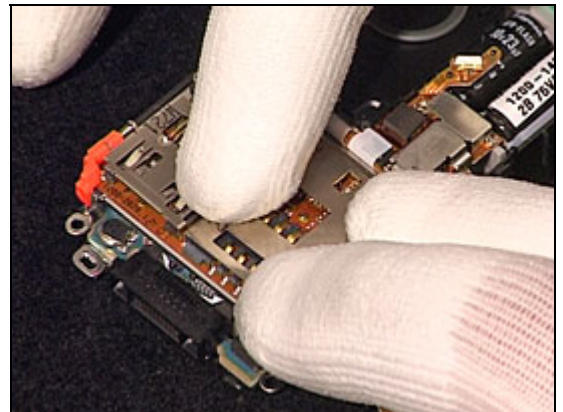
Carefully press the M2 holder to fix it to the Holder Metal Frame.



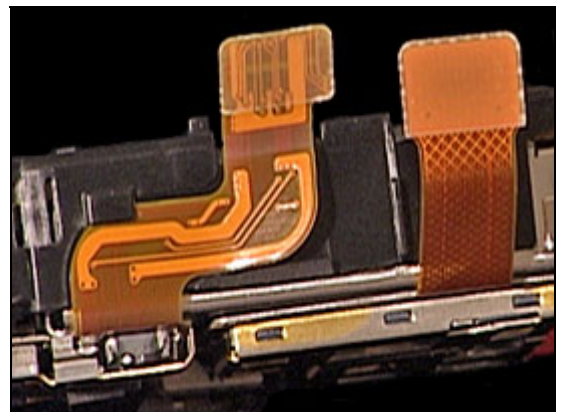
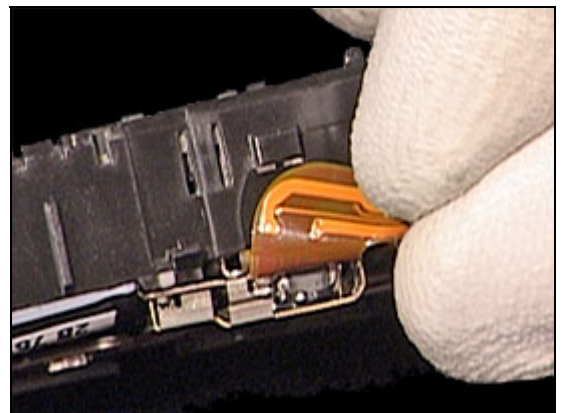
SIM/COMBO Reader *continued*

BE CAREFUL WHEN PRESSING NOT TO DAMAGE THE *SIM* OR *M2* HOLDER

Carefully press the M2 and SIM holder to fix it to the Holder Metal Frame.

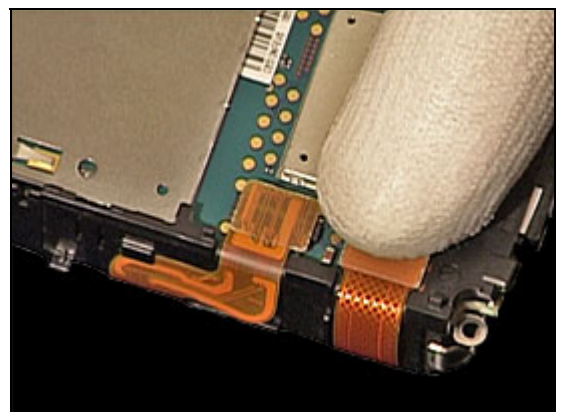


Insert the Flex Film under the plastic clip on the Inner Frame.



BE CAREFUL NOT TO DAMAGE THE *BTB* CONNECTORS

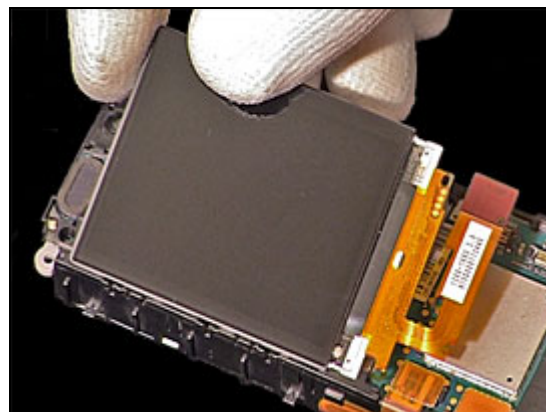
Connect the two Board to Board connectors to the Main PCB.



4.1.10 Display

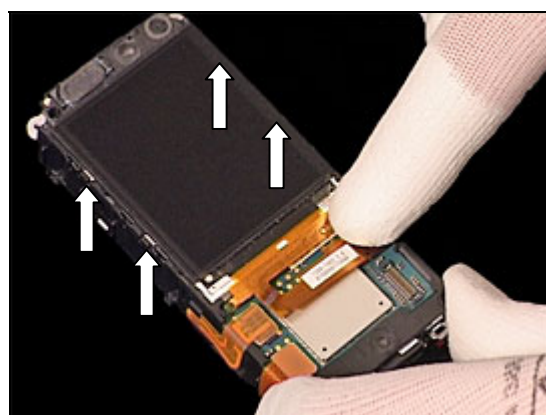
BE CAREFUL NOT TO DAMAGE THE LCD

Insert the Display into the Inner Frame. Carefully press it into position underneath the 4 snap hooks.



BE CAREFUL NOT TO DAMAGE THE BTB CONNECTOR

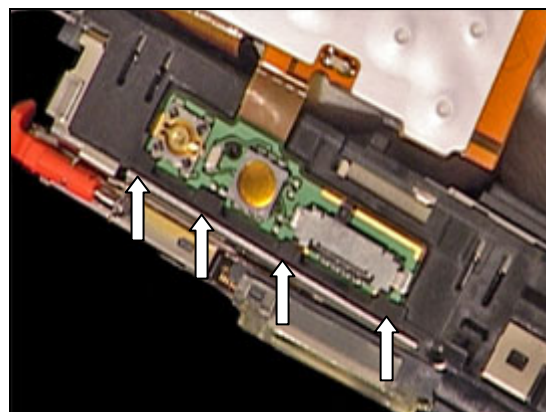
Connect the Display Board to Board Connector to the Main PCB.



4.1.11 Key FPC

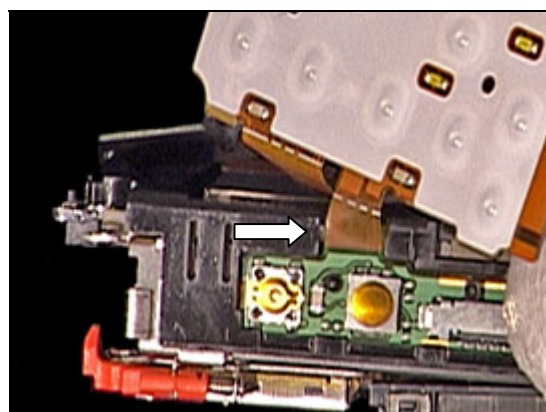
MAKE SURE YOU DO NOT DAMAGE THE FPC

Carefully place the Camera switch FPC into the Inner frame, make sure it is positioned underneath the four plastic hooks.



MAKE SURE YOU DO NOT DAMAGE THE FPC

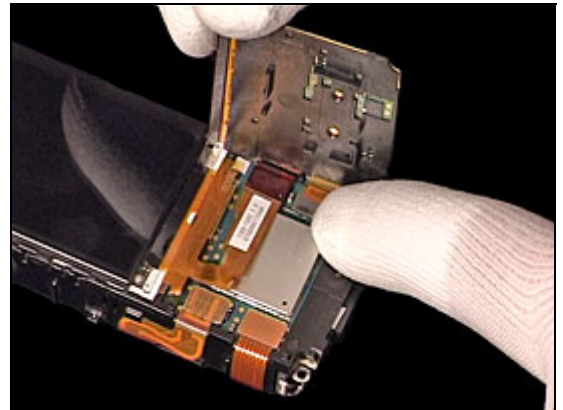
Carefully tilt the Key FPC so you are able to get it underneath the fifth plastic hook on the Inner Frame.



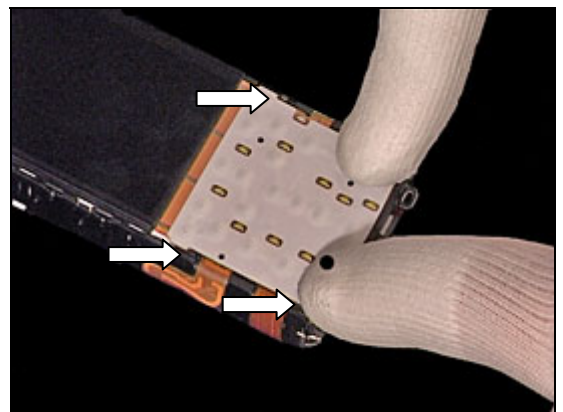
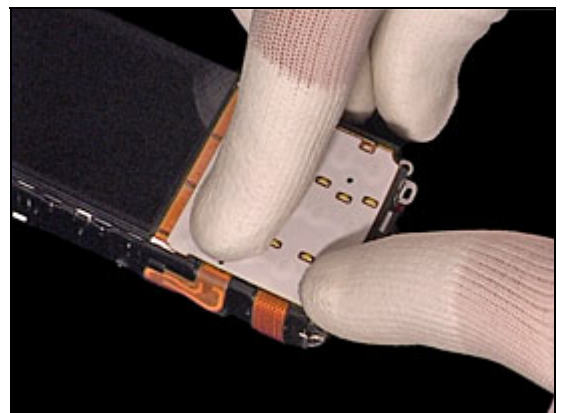
KEY FPC *continued*

MAKE SURE YOU DO NOT DAMAGE THE FPC OR BTB CONNECTOR

Carefully connect the Key FPC Board to Board connector to the Main PCB.



Put the Key FPC in place and gently press it until it snaps into position underneath the three snap hooks of the Inner Frame.



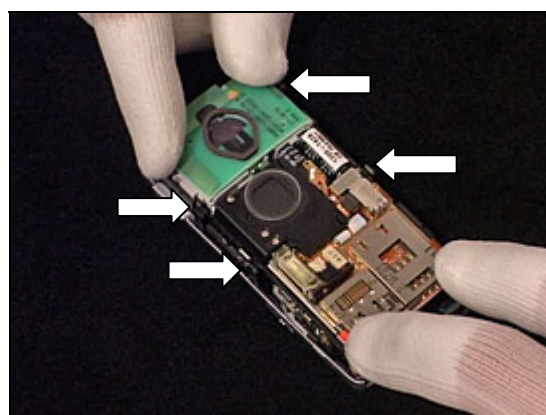
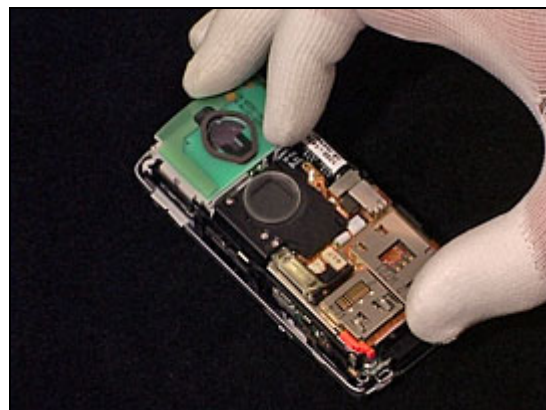
4.1.12 Front Cover Assembly

Position the core unit into the Front Cover Assembly.



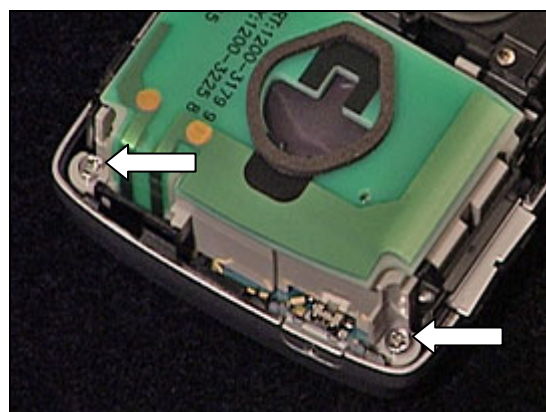
Front Cover Assembly *continued*

Once the core unit has been positioned inside the Front Cover Assembly, carefully press all four sides of the core unit at the same time. Make sure it has snapped into position into all 4 snap hooks of the Inner Frame.

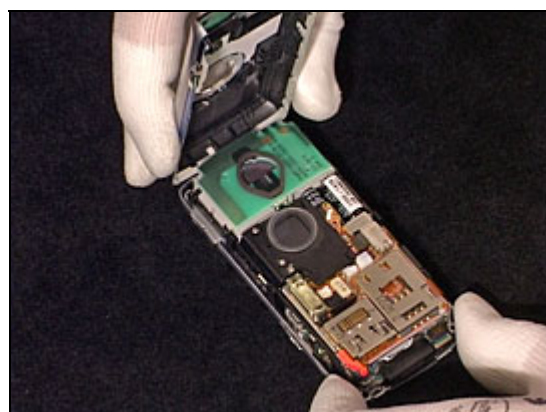


4.1.13 Rear Cover Assembly

Insert and tighten the two screws (Torx T6 15Ncm).



Position the Back Cover Assembly as shown in picture.



Rear Cover Assembly *continued*

Carefully fold the Rear Cover Assembly over the Core Unit and snap it into place. Make sure all snap hooks are attached.

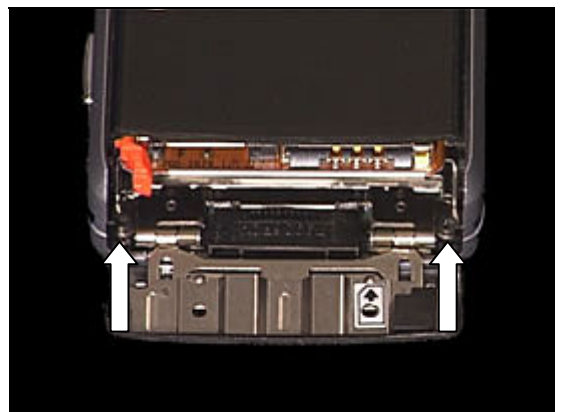


4.1.14 Battery Door

Position the Battery Door as shown in picture.



Insert and tighten the two screws (Torx T4 15Ncm).



4.1.15 Battery and M2

Insert the Battery and the M2 Memory Stick. Close the Battery Door.



5 Revision history

Rev.	Date	Changes / Comments
1	2007-10-09	Initial Release
2	2008-03-04	Chapter 3.32 updated with instructions